

INVISI-FAST™

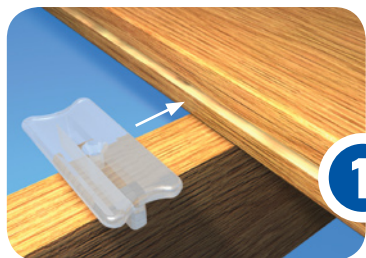
HIDDEN DECK FASTENER

INSTALLATION

BISCUIT™

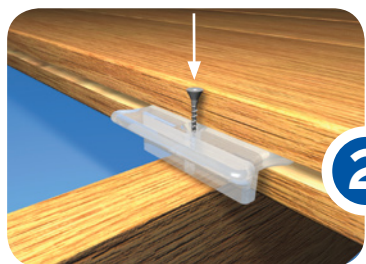
CLEAR POLYCARBONATE GROOVED BOARD FASTENER

INSTALLATION

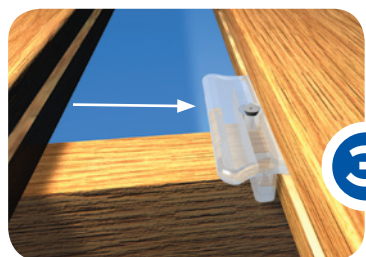


Step 1: Insert Invisi-Fast™ Biscuit fastener into one side of grooved board.

Center the fastener perpendicular to the joist making sure the screw hole lies in the center of the joist.



Step 2: Insert screws into Invisi-Fast Biscuit, place on joists in groove, do not tighten completely.



Step 3: Slide next deck board into place. Now tighten the screw.

Optional Step 4: Use the standard Invisi-Fast No-Spacer on your first, last board and stairs to create a complete screw/nail free surface.*

Please be sure to check with your deck board manufacturer for proper deck board spacing when using the Invisi-Fast™ Hidden Deck Fastening System.

Use necessary safety precautions when installing Invisi-Fast™ Hidden Deck Fasteners.

Patent Pending

*Must be purchased separately.



www.invisifast.com
1-866-766-9427

WARRANTY

The following warranty is made in lieu of all other warranties expressed or implied. Any goods proven to be defective due to materials will be replaced, or purchase price refunded. Under no circumstances shall the manufacturer be responsible for damages in excess of the purchase price. User shall determine the suitability of the product for its intended use and assumes all risks of its use or handling. There are no warranties on screws or tools sold or recommended. Please contact M.M. Products for shipping information. M.M. Products, Inc. is not responsible for damages caused by excessive shrinking or expanding of treated lumber due to moisture.

For more information, visit www.invisifast.com or call 1.866.766.9427